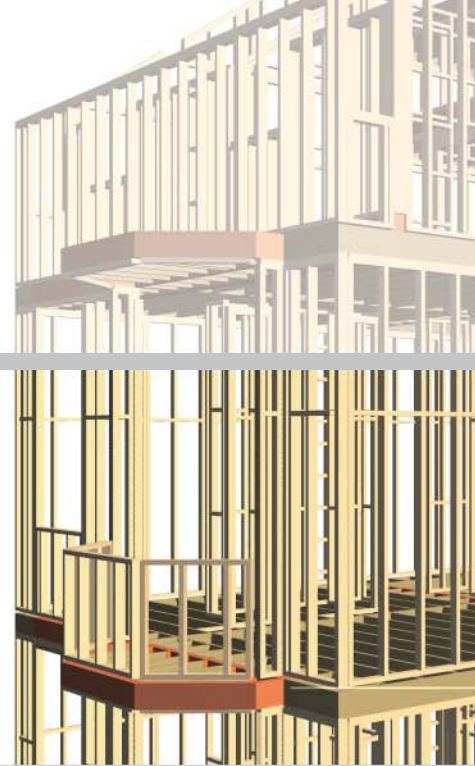
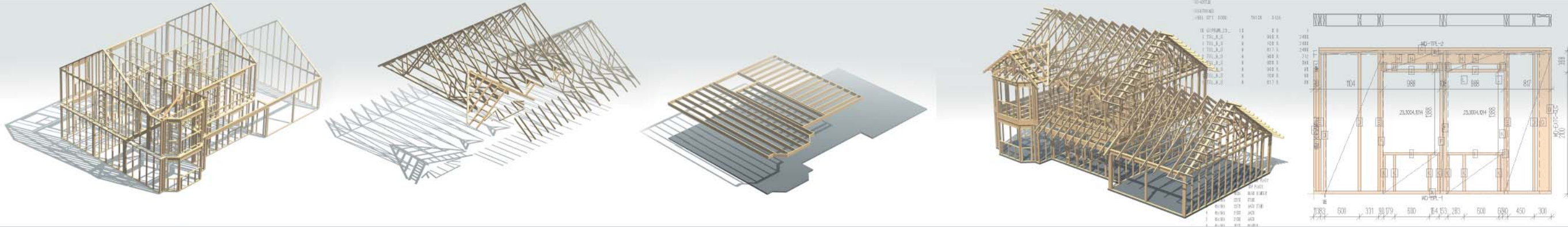


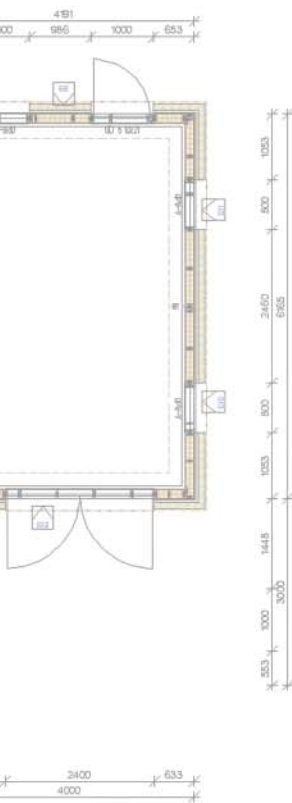
## Major Benefits:

- ✓ Fast and Easy Design of Complete Building Framing
- ✓ Automated Generation of All Panel Manufacturing Data
- ✓ Improved Design Productivity and Quality
- ✓ Reduce Errors and Delays in Manufacturing and Construction
- ✓ Timely Cost Estimates and Quantations
- ✓ Accurate Estimating and material Management
- ✓ Minimize Waste of Framing Materials
- ✓ Powerful 3-Dimensional Design Visualization and Checking
- ✓ Interactive Framing Detailing and Editing
- ✓ Intergration with Automated Manufacturing Systems



Vertex Systems Oy is a Finnish software company founded in 1977. We develop and market Vertex software suites designed for technical engineering and data management.

# VERTEX FRAMER



## Real Productivity for the Building Industry

**Vertex Framer For Wood** is based on the industry leading Vertex BD software system (Vertex Building design System) which provides complete architectural design and product information management solutions for building manufacturers and production builders.

Vertex Framer was developed for framing and manufacturing applications in close cooperation with many of the leading building systems manufacturers based on their real needs and requirements. We have increased the productivity of each customer over any other system they used before. Vertex Framer has become the most powerful solution for framing and building companies.

**Vertex Systems Oy**  
**Corporate Headquarters**  
Vaajakatu 9, 33720 Tampere, Finland  
tel +358 3 313 411  
fax +358 3 3134 1450  
Email: [info@vertex.fi](mailto:info@vertex.fi)  
[www.vertex.fi](http://www.vertex.fi)

**Vertex Systems UK**  
Windsor House, Cornwall Road  
Harrogate, HG1 2PW, UK  
tel +44 1423 500 211  
fax +44 1423 500 212  
Email: [infoUK@vertex.fi](mailto:infoUK@vertex.fi)  
<http://uk.vertex.fi>

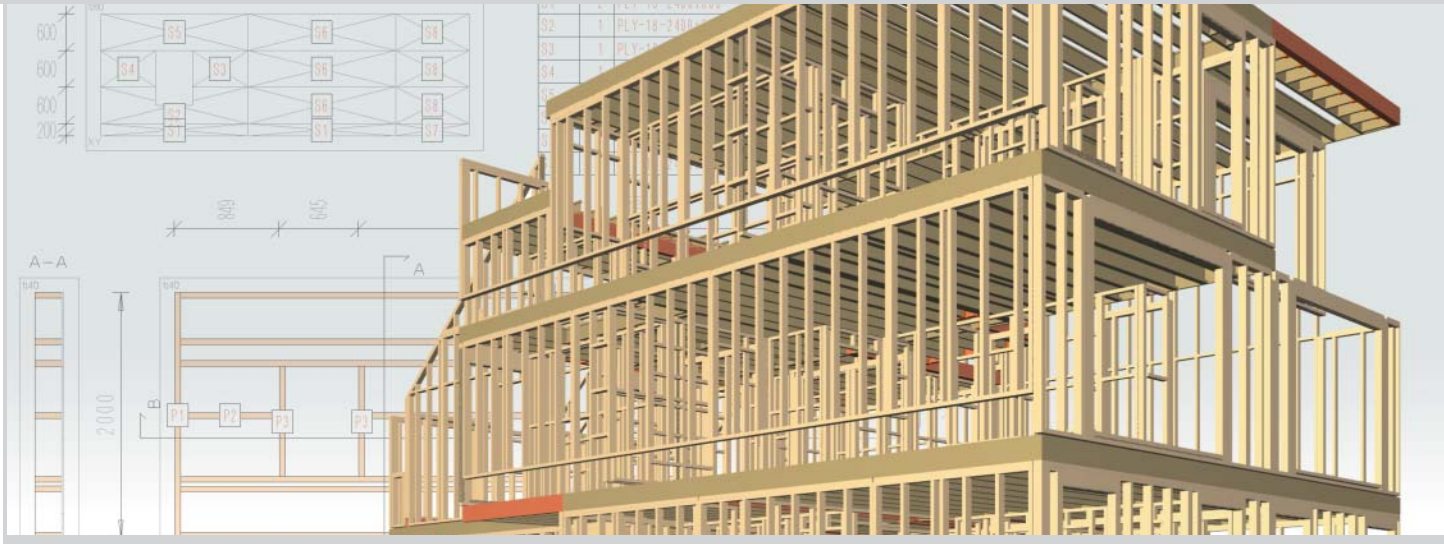
**Vertex Systems Area Office**  
1739 Route de cap Grinez  
62850 Alembon, France  
tel +33-321-358 186  
fax +33-321-358 438  
Email: [info@vertex.fi](mailto:info@vertex.fi)  
[www.vertex.fi](http://www.vertex.fi)

FOR WOOD

Design Automation Software



## Design Automation for Wood Framing and Panel Manufacturing



Panel manufacturing drawings, cutting lists and material quantities can be generated quickly and accurately.

Vertex Framers for Wood is a highly automated Design and Product Information Management System for wood framed construction and panel manufacturing. The Vertex Framers software generates all framing plans, drawings, materials, panel manufacturing information and cutting list for the design, construction and manufacturing of residential, commercial and industrial buildings using wood framing. With user definable framing rules, the system can be customized to meet the individual needs and specific requirements of each company.

With Vertex Framers the user can quickly generate floor plans and 3-Dimensional wood framing models with accurate material cutting lists for all wall, floor, ceiling, and roof framing.

Vertex Framers will improve productivity and quality in all phases of the framing and manufacturing process for wood construction.

Vertex Framers can be directly interfaced with most automated manufacturing and engineering systems used in the wood framing industry.

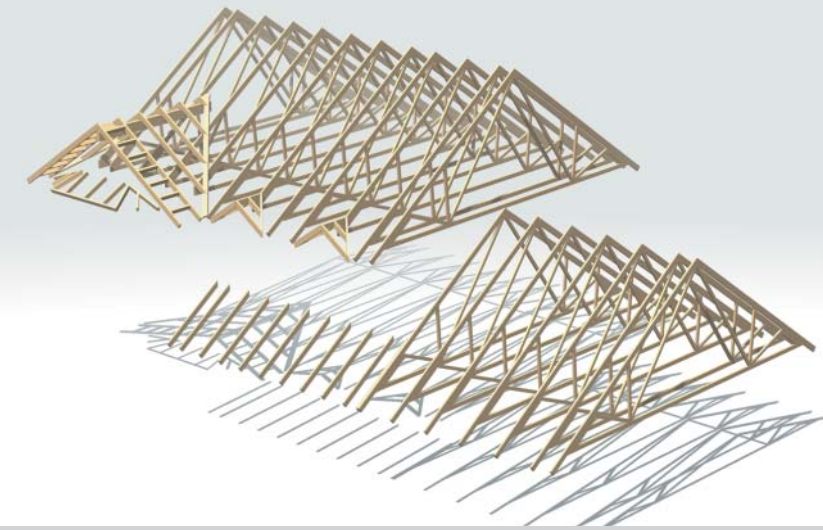
### Walls, Floors and Roofs

Once the floor plan has been input, the framing of walls, floors and roof is virtually automatic based on the defined framing rules. Vertex Framers includes industry standard wood profiles shapes, and accurately calculates and

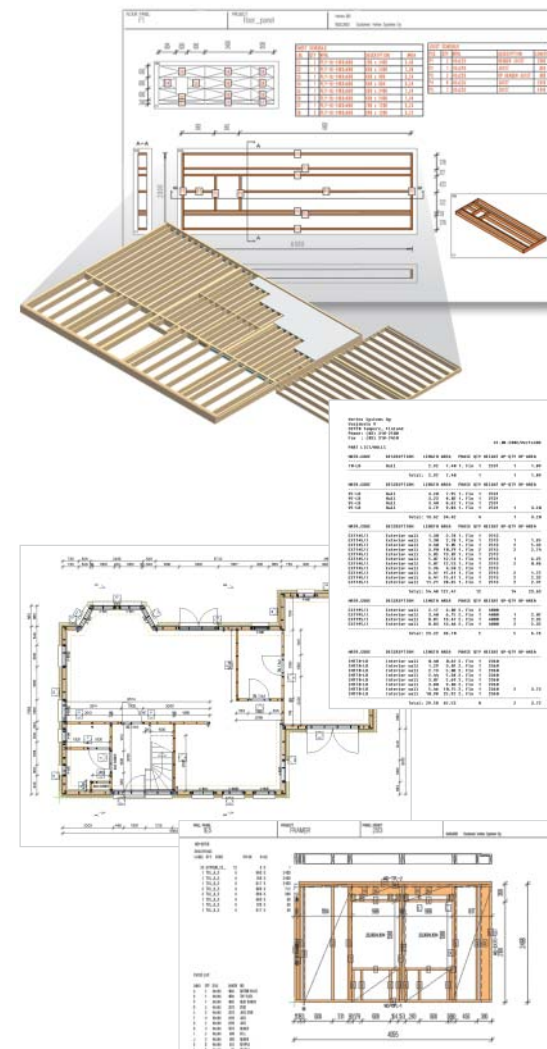
represents the studs, tracks, headers, backers, sheathing, joists, rafters, and the complete framing assembly with all details. The framing rules can be set to meet each company's construction and manufacturing processes and the local building code requirements. The software takes into account the material gauge in calculating the final cut lengths. Additional tolerances can be defined by the user and included in the calculation rules. The result is a very high level of accuracy in component design, assembly and cutting lists.

### Wall Panels

Vertex Framers automatically generates all required information for wall panel manufacturing, including panel drawings, material lists, cutting lists, etc. It includes flexible tools for defining the panelization and framing detail rules to meet each company's manufacturing standards.



The panel framing and assembly rules can be modified to meet your design and manufacturing procedures. With its flexible rules based automated framing system and powerful interactive tools Vertex Framers will build the way you want it.



3-Dimensional framing models provide quick and accurate checking of all components prior to assembly or production.

### Floor and Roof Panels

With Vertex Framers the user can easily generate complete floor and roof panels including cutting lists, piece schedule, sheathing schedule and labelling. All the necessary production drawings with cutting lists are generated automatically. Fully customizable framing rules, details and joint component library make Vertex Framers an unbeatable design tool for the wood framing industry.

### Framing Material Lists

Vertex Framers calculates and tracks all framing material quantities, their location and their use within the structure. In addition to manufactured panels, the system can be used to generate packaged or pre-cut framing material lists for walls, floors, ceilings and roofs. By a single command the software collects all the framing materials and cut lists for the entire project and outputs it in the desired format.

### Manufacturing Automation

Vertex Framers automates the generation of all manufacturing data. If required, the framing and cutting information can be directly exported to automated production equipment as well as to inventory control and scheduling systems.

